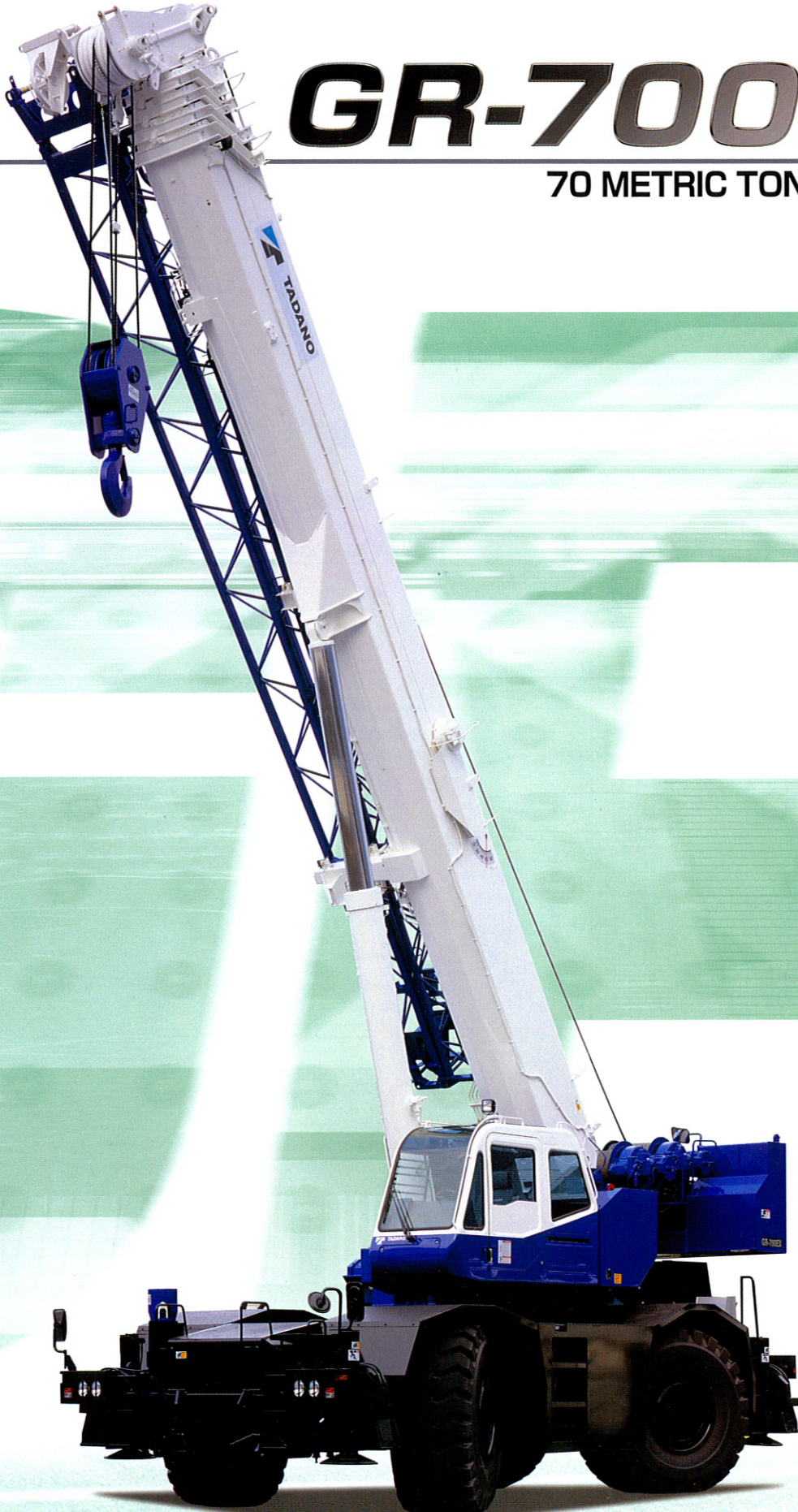




ROUGH TERRAIN CRANE

GR-700EX

70 METRIC TON CAPACITY



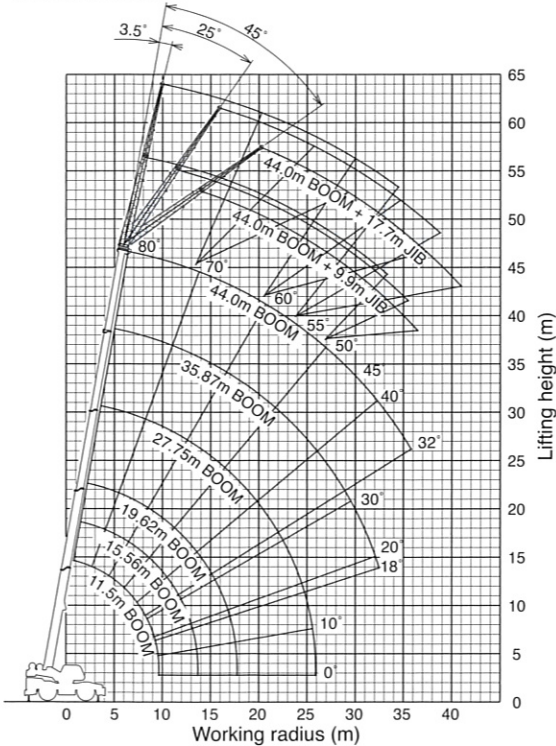
MODEL : GR-700EX

SPECIFICATIONS

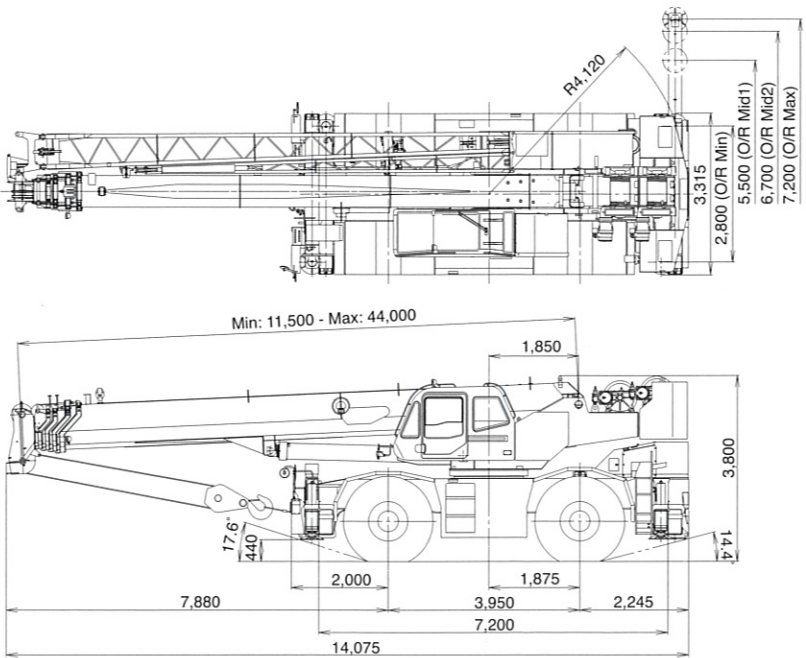
| | |
|------------------------------|--|
| MAXIMUM CAPACITY | 70,000 kg at 3.0 m |
| TRAVELING SPEED(MAX.) | 39 km/h |
| GRADEABILITY (TAN θ) | 112 % (at stall) |
| WEIGHT Gross vehicle mass | 48,315 kg * 48,485 kg |
| -front axle | 24,695 kg * 24,740 kg |
| -rear axle | 23,620 kg * 23,745 kg * EUROSPEC |
| MIN.TURNING RADIUS | 11.9 m (2-wheel steering) 6.7 m(4-wheel steering) (at center of extreme outer tire) |
| BOOM | 5-section full length power telescoping boom. |
| Fully retracted length | 11.5 m |
| Fully extended length | 44.0 m |
| Extension speed | 32.5 m in 145 s |
| Elevation speed | -2° to 80° in 77 s |
| JIB | 2-staged swingaround boom extension. Triple offset(3.5°/25°/45°) type. Assistant cylinders for mounting and stowing. |
| Length | 9.9 m and 17.7 m |
| MAIN WINCH | Variable speed type with grooved drum driven by hydraulic axial piston motor. |
| Single line pull | 54.9 kN {5,600 kgf} |
| Single line speed | 143 m/min. (at the 4th layer) |
| Wire rope | 19 mm (Diameter) |
| AUXILIARY WINCH | Variable speed type with grooved drum driven by hydraulic axial piston motor. |
| Single line pull | 54.9 kN {5,600 kgf} |
| Single line speed | 125 m/min. (at the 2nd layer) |
| Wire rope | 19 mm (Diameter) |
| SWING speed | 2.3 min ⁻¹ {rpm} |
| Tail swing radius | 4,120 mm |
| HYDRAULIC SYSTEM | Pumps... 2 variable piston pumps for telescoping, elevating and winches. Tandem gear pump for steering, swing and optional equipment. Control valves.... Multiple valves actuated by pilot pressure with integral pressure relief valves. Circuit... Equipped with air cooled type oil cooler. Oil pressure appears on AML display for main circuit. Hydraulic oil tank capacity.... approx. 740 liters |

| | |
|--|--|
| TADANO Automatic Moment Limiter (Model: AML-L) | Main unit in crane cab gives audible and visual warning of approach to overload. Automatically cuts out crane motions before overload. The AML monitors each outrigger extended length and automatically programs the corresponding "RATED LIFTING CAPACITY" table. With working range (load radius and/or boom angle and/or tip height and/or swing range) limit function. Automatic Speed Reduction and Soft Stop Function on boom elevation and swing. Nine functions are displayed. Digital liquid crystal display: • Either boom angle or moment % • Either boom length or potential hook height • Either actual load radius or swing angle • Actual hook load • Permissible load • Either jib offset angle or number of parts line of rope • Boom position indicator • Either outrigger position or on-tire indicator Bar graphical display: • Either moment as percentage or main hydraulic pressure |
| OUTRIGGERS | 4-hydraulically operated H-type outriggers. Each outrigger controlled simultaneously or independently from the crane cab. Equipped with extension width detector for each outrigger. |
| Extended width | Fully ... 7,200 mm, Middle ... 6,700 mm & 5,500 mm Minimum ... 2,800 mm, Float size (Diameter) ... 500 mm |
| CARRIER | Rear engine, left-hand steering, driving axle 2-way selected type (by manual switch). 4 x 2 front drive, 4 x 4 front and rear drive |
| ENGINE | Model..... MITSUBISHI 6M60-TLU3B [EUROMOT IIIA] Type 4 cycle, turbo charged and after cooled, 6 cylinder in line, direct injection, water cooled diesel engine. Piston displacement...7,545 cm ³ Max.output...200 kW{272PS} at 2,600 min ⁻¹ {rpm} Max.torque ...785 N-m {80 kgf-m} at 1,400 min ⁻¹ {rpm} |
| TRANSMISSION | Electronically controlled full automatic transmission. |
| STEERING | Hydraulic power steering controlled by steering wheel. 4 steering modes available: 2-wheel front, 2-wheel rear 4-wheel coordinated, 4-wheel crab |
| SUSPENSION | Front..... Rigid mounted to the frame. Rear..... Pivot mounted with hydraulic lockout cylinders. |
| TIRES | 29.5 - 25, Single x 4 |
| FUEL TANK CAPACITY | 300 liters |

WORKING RANGE



DIMENSION



Continuing technical development requires Tadano to retain the right to make specifications, equipment and price changes without notice.

*Some specifications are subject to change



TADANO LTD. (International Division)
4-12, Kamezawa 2-chome, Sumida-ku Tokyo 130-0014, Japan
Tel:81-3-3621-7750 Fax:81-3-3621-7785
http://www.tadano.co.jp/indexe.htm E-mail:tdnihq@tadano.co.jp

