

UR-W295C

UNIC MINI-CRAWLER CRANE

UR-W295C is narrow enough to allow access through standard size doorway, but with 2.93t of lifting power.

UNIC original stability sensor system provides the benefit of turnover protection for safety. Its outriggers allow for independent multi-angle configurations to place at the best position in restricted or confined area. Easy and quickly installed searcher hook and fly jib options will increase working radius and lifting height further more.

Max 8.41m Working radius

Max 2.93t x 1.4m Lifting capacity

1850kg Mass of crane

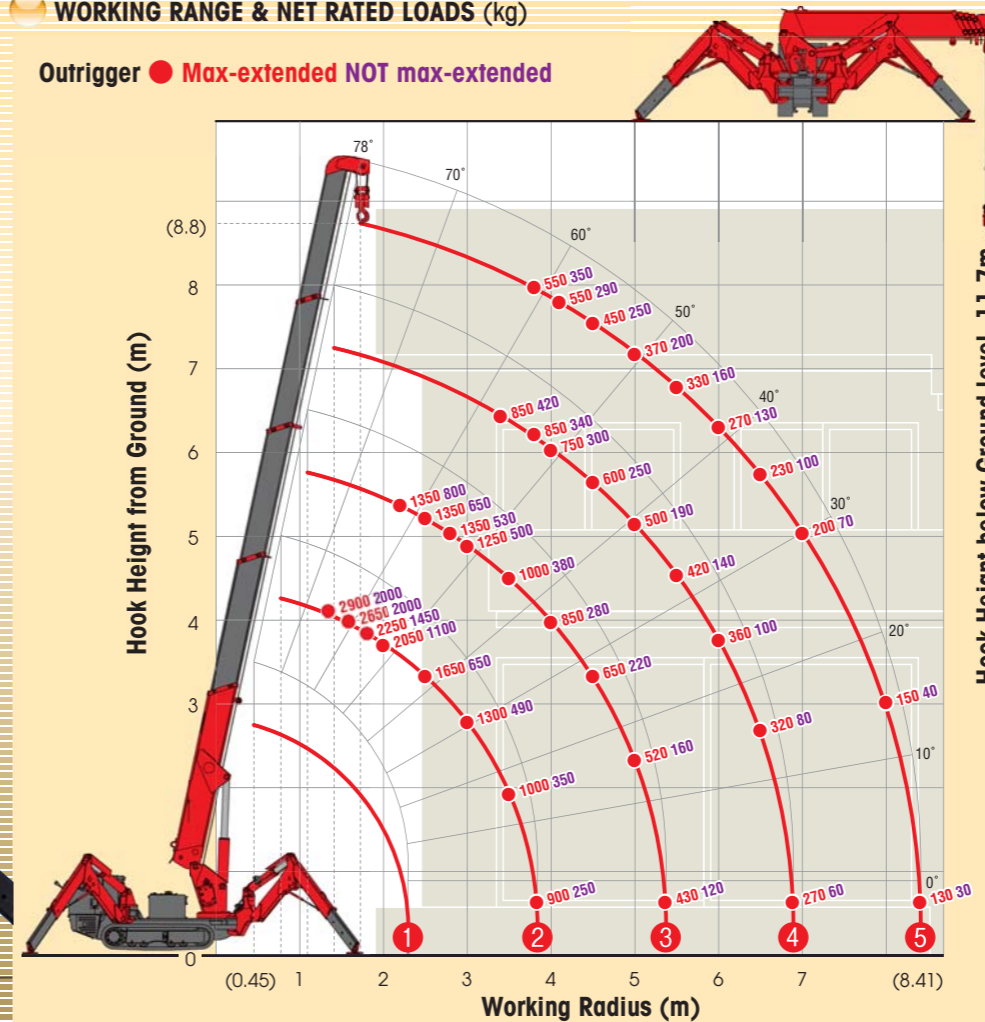
Radio remote control

Max 8.8m Hook height (Approx.) (Above ground level)

with electric power unit

WORKING RANGE & NET RATED LOADS (kg)

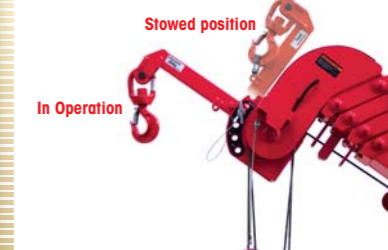
Outrigger ● Max-extended NOT max-extended



Load meter

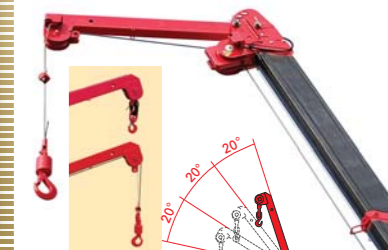


Searcher hook assembly (Options)



| | |
|------------------|-------------------|
| Length | 500mm |
| Lifting capacity | Max. 300kg |
| Tilt angles | 0°, 20°, 40°, 60° |

Fly jib assembly (Options)

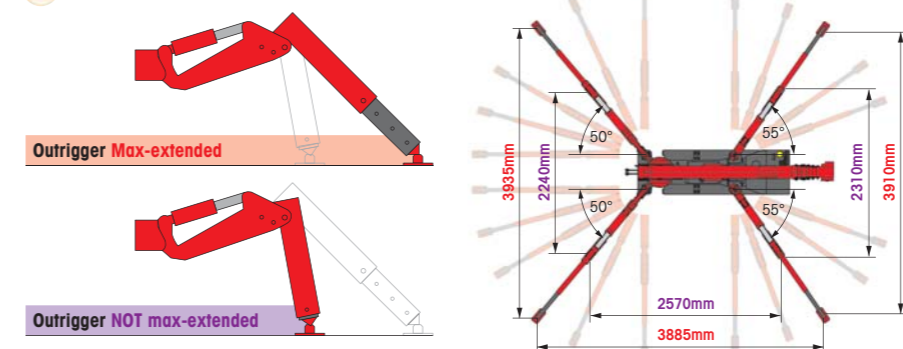


| | |
|------------------|-------------------|
| Length | 1.5m |
| Lifting capacity | Max. 700kg |
| Tilt angles | 0°, 20°, 40°, 60° |

SPECIFICATIONS

| Crane model | UR-W295C | UR-W295C1 |
|-----------------------------|--|--|
| Lifting capacity | Max. 2.93t at 1.4m | |
| Working radius | Min. 0.45m, Max. 8.41m | |
| Hook height (Approx.) | Above ground level | Max. 8.8m |
| | Below ground level | Max. 11.7m with 4-part line |
| Boom | Length | Min. 2.53m to Max. 8.65m |
| | Extending speed [with electric power unit] | 6.12m / 22.0 sec. [50Hz] 6.12m / 34.0 sec. [60Hz] 6.12m / 28.0 sec. |
| | Raising angle / speed [with electric power unit] | 0° to 78° / 11.0 sec. [50Hz] 0° to 78° / 18.0 sec. [60Hz] 0° to 78° / 15.0 sec. |
| Winch | Structure | 5-section box beam type telescoping boom |
| | Single line speed [with electric power unit] | 40.0 m/min (at 4th layer) [50Hz] 22.0 m/min (at 4th layer) [60Hz] 27.0 m/min (at 4th layer) |
| | Hook speed [with electric power unit] | 10.0 m/min at 4th layer with 4-part line [50Hz] 5.5 m/min (at 4th layer with 4-part line) [60Hz] 6.7 m/min (at 4th layer with 4-part line) |
| Slewing | Structure | Hydraulic motor driven, spur gear reduction, with automatic mechanical brake |
| | Wire rope | Construction : IWRC 6 x WS(26) GRADE B / Diameter x Length : 8mm x 54.0m / Breaking strength : 42.4kN [4320 kgf] |
| | Hook block | 2.90t capacity, 2 sheaves with safety latch |
| Outriggers | Range | 360° continuous rotation on a ball bearing race |
| | Speed | 1.5 rpm |
| | Structure | Trochoid motor, worm gear reduction, and worm self-locking brake (supported by ball bearings) |
| Hydraulic Pump | Type | Variable delivery piston pump |
| | Rated pressure | 21.6 MPa [220 kgf/cm ²] |
| | Rated delivery | 38 liters/min |
| | Rated revolution | 2000 rpm |
| Hydraulic oil tank capacity | 27 liters | |
| Safety devices | Pressure relief valve for hydraulic circuit / Counterbalance valves for boom raising and boom telescoping cylinders / Pilot-operated check valves for outrigger cylinders / Boom angle indicator with load indicator / Hook safety latch / Automatic mechanical brake for winch / Automatic stop for overwinding / Overwinding alarm / Automatic stop for leaving minimum wire rope / Emergency stop button (ignition cut) / Inter-lock device of crane and crawling levers / Inter-lock device of crane and outriggers / Level / Turn over prevention device / Load meter | |

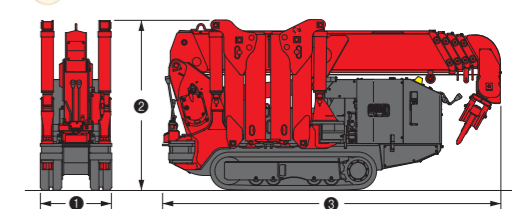
OUTRIGGER POSITIONS



CRAWLING GEAR

| Crane model | UR-W295C | UR-W295C1 |
|--|---|---|
| Crawling speed [with electric power unit] | 0~2.3 km/h, forward / reverse [50Hz] 0~1.2 km/h [60Hz] 0~1.4 km/h | 0~2.0 km/h, forward / reverse [50Hz] 0~1.2 km/h [60Hz] 0~1.4 km/h |
| Hill climbing ability | 20° | 20° |
| Tread length | 1050mm | 1050mm |
| Ground contact pressure [with electric power unit] | 48.0 kPa [0.49 kg/cm ²] 51.4 kPa [0.52 kg/cm ²] | 49.8 kPa [0.51 kg/cm ²] 52.9 kPa [0.54 kg/cm ²] |
| Engine manufacturer / model | Mitsubishi / GB400LE | Kubota / Z482-E3B |
| Displacement | 391cc | 479cc |
| Maximum output | 6.6kW(9.0PS) / 1800 rpm, Rated output | 7.4kW(10.0PS) / 2600 rpm, Rated output |
| Fuel | Petrol | Diesel |
| Fuel tank capacity | 6 liters | 10 liters |
| Steering | Hydraulic drive independent of left / right | Hydraulic drive independent of left / right |
| Starter | Starter motor (Recoil starter) | Starter motor |

DIMENSIONS



| Crane model | UR-W295C | UR-W295C1 |
|----------------|-----------------|-----------------|
| ① Total width | 600mm | |
| ② Total height | 1375mm [1430mm] | |
| ③ Total Length | 2690mm | 2730mm |
| Mass of crane | 1850kg [1980kg] | 1920kg [2040kg] |

Electric power unit specifications

| | |
|-------------|--|
| Rated power | 3.7kW (3-phase 4 poles) |
| Voltage | AC 200V or 400V (50Hz / 60Hz) 3 phase 4P |

*Not included any cables.